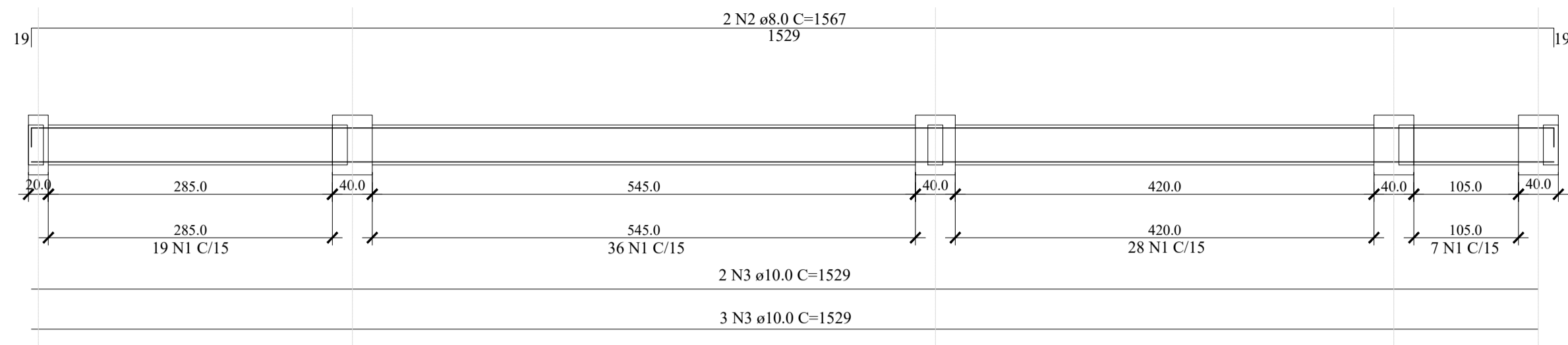
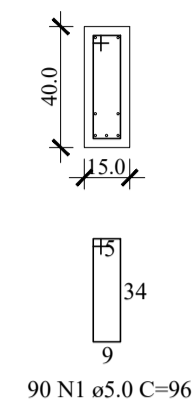


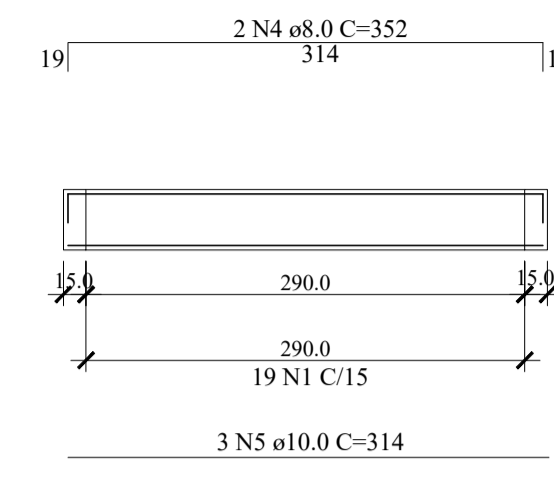
V1
ESC 1:50



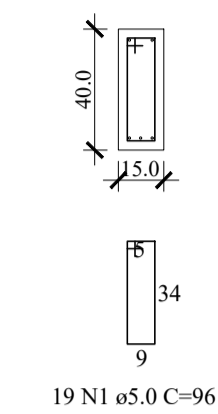
SEÇÃO A-A
ESC 1:25



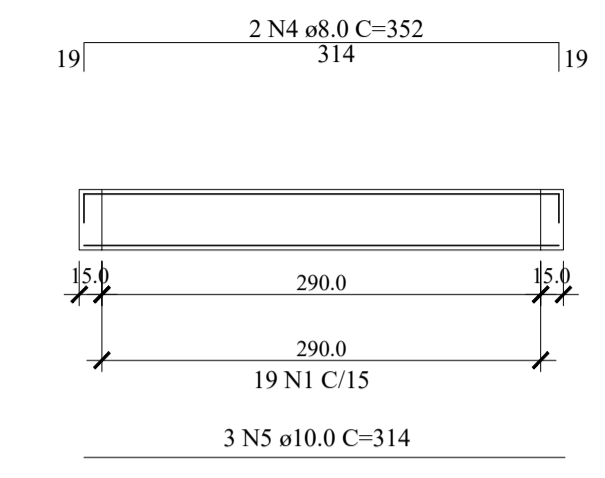
V2 - 1
ESC 1:50



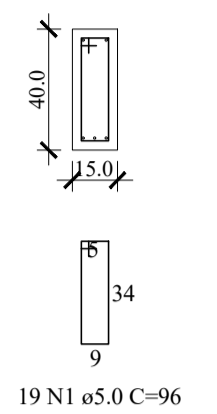
SEÇÃO A-A
ESC 1:25



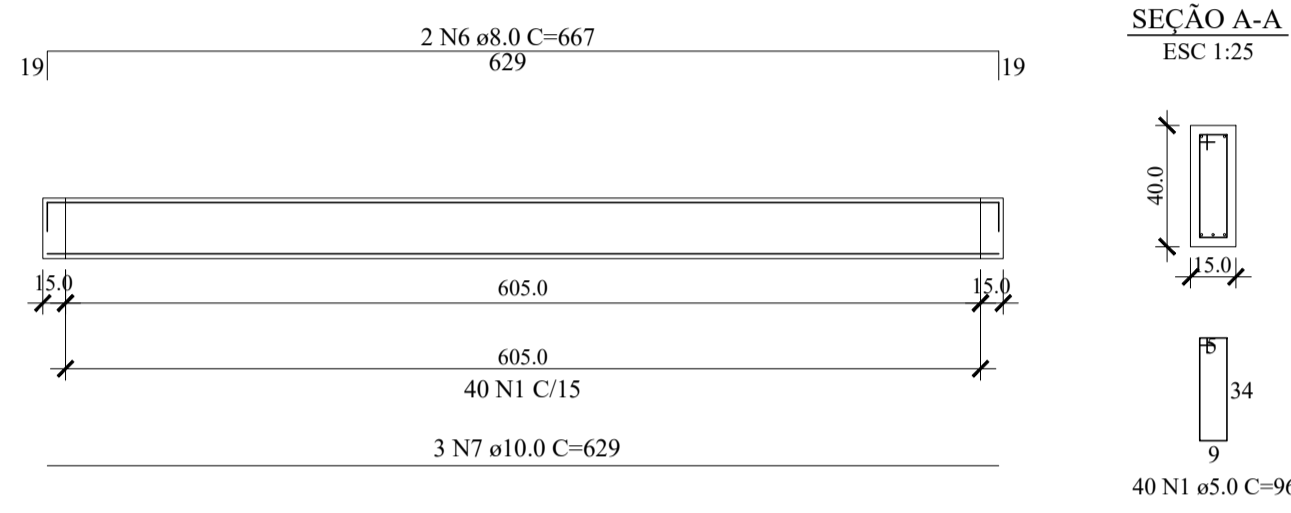
V2 - 2
ESC 1:50



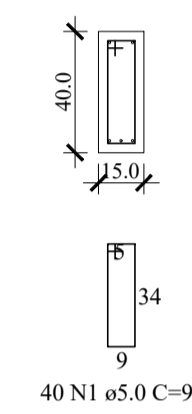
SEÇÃO A-A
ESC 1:25



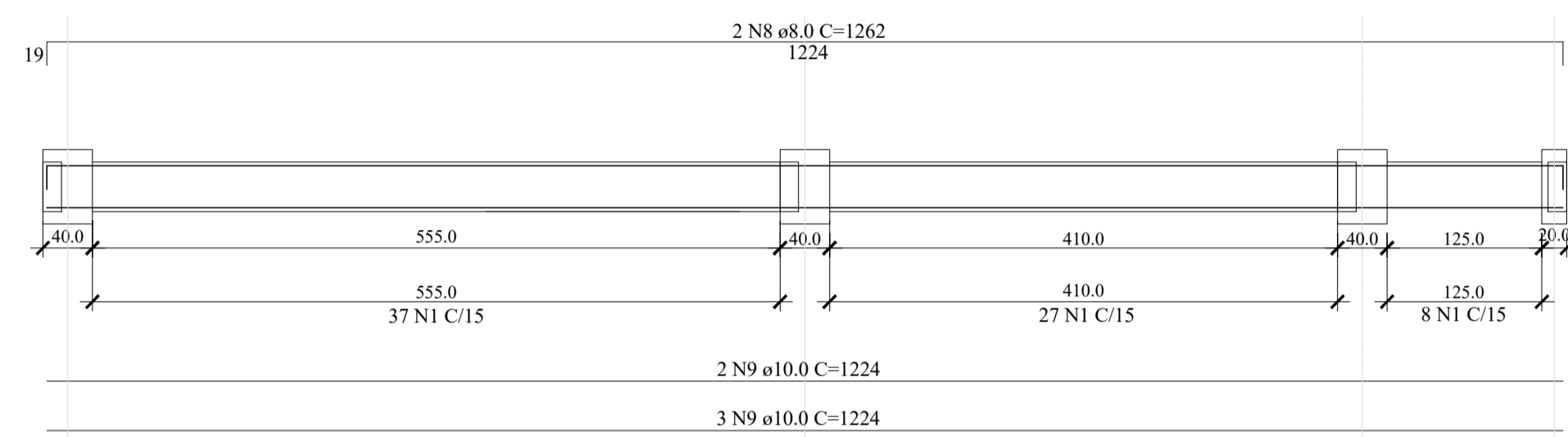
V3
ESC 1:50



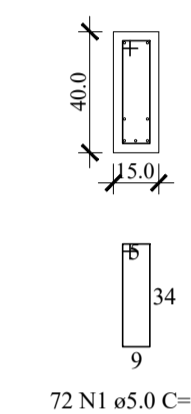
SEÇÃO A-A
ESC 1:25



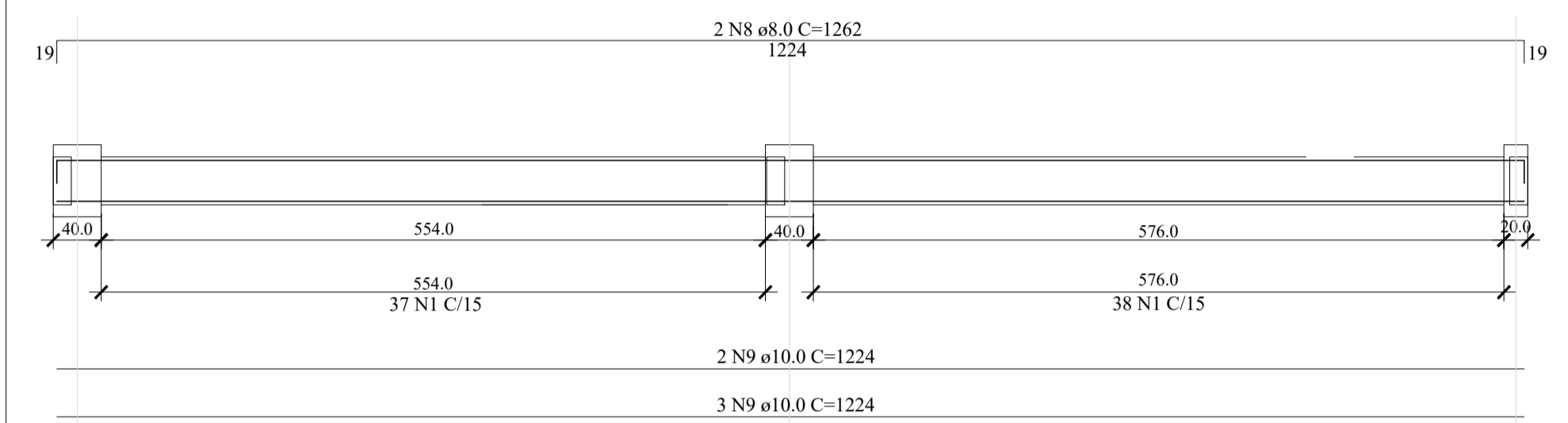
V4
ESC 1:50



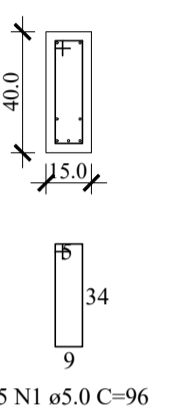
SEÇÃO A-A
ESC 1:25



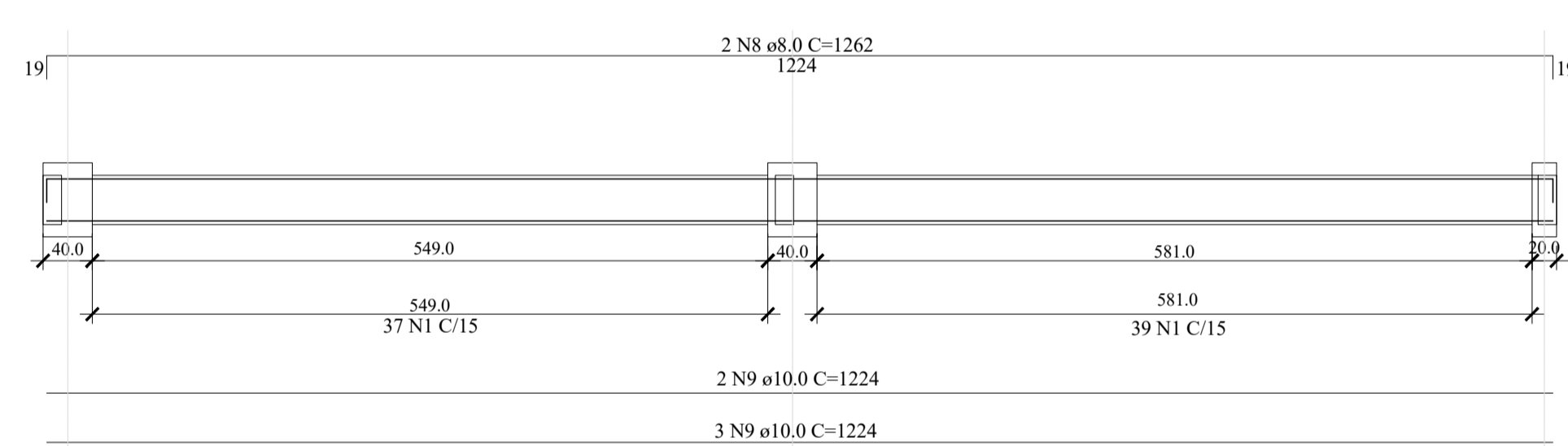
V5
ESC 1:50



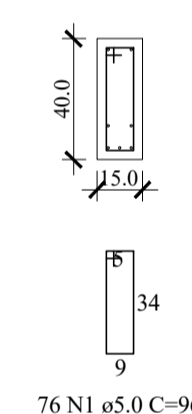
SEÇÃO A-A
ESC 1:25



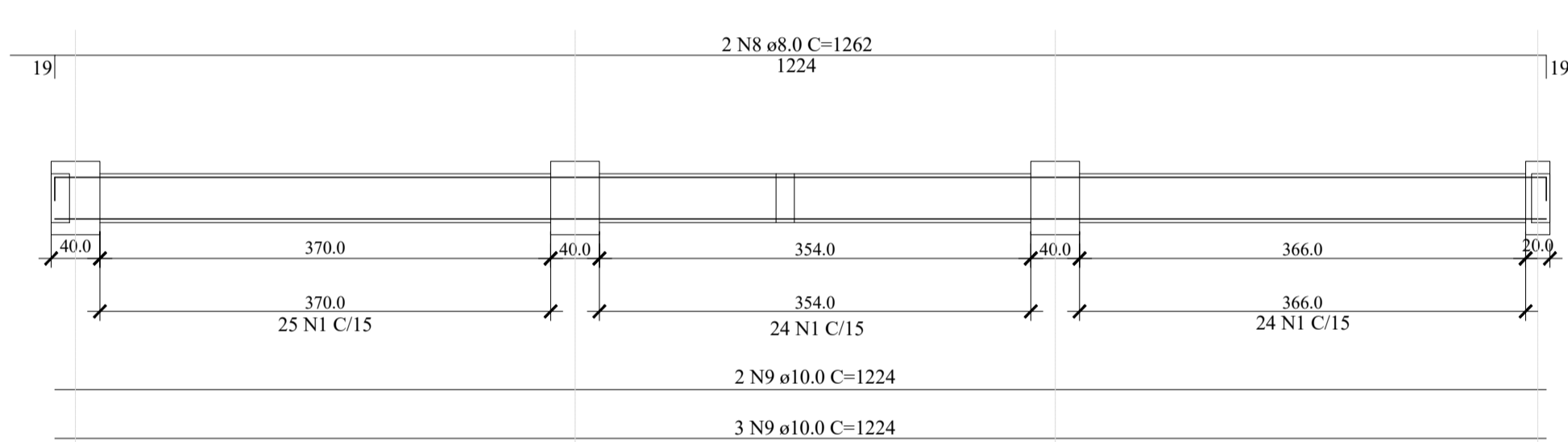
V6
ESC 1:50



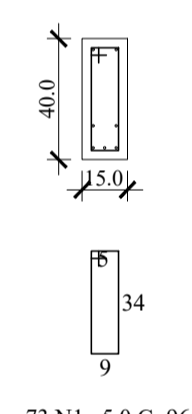
SEÇÃO A-A
ESC 1:25



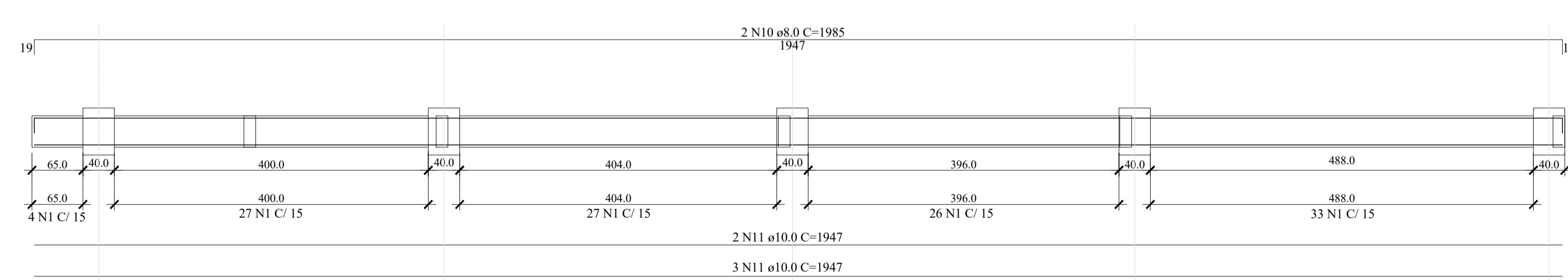
V7
ESC 1:50



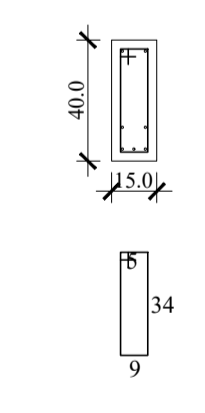
SEÇÃO A-A
ESC 1:25



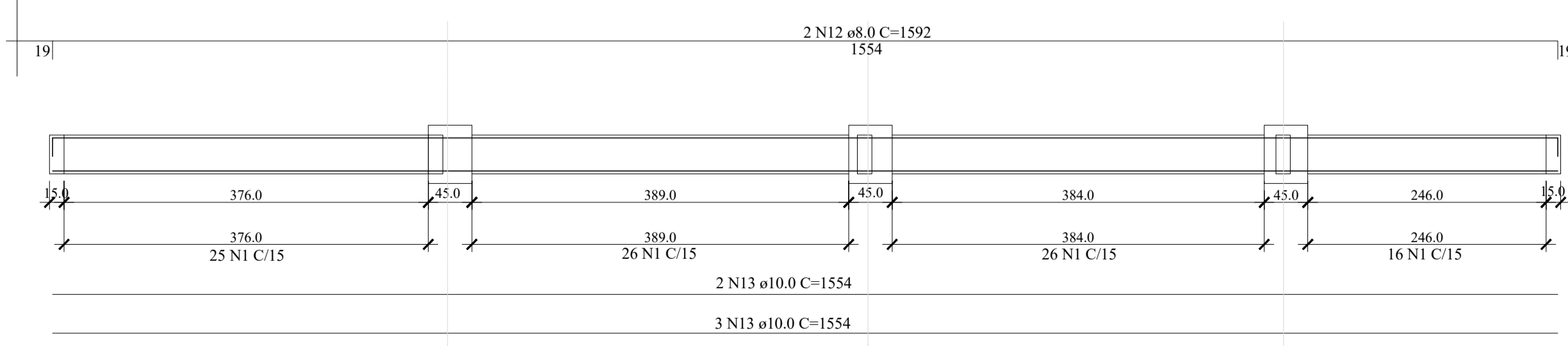
V8
ESC 1:50



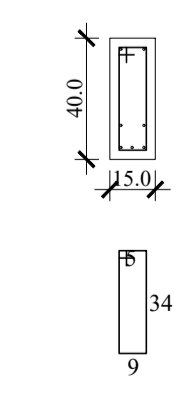
SEÇÃO A-A
ESC 1:25



V9 - 1
ESC 1:50



SEÇÃO A-A
ESC 1:25



**CENTRO DE HABILITAÇÃO E REABILITAÇÃO
A PESSOAS PORTADORES DE DEFICIÊNCIA
NÚCLEO DE ATENDIMENTO AO AUTISTA (NASB)**

PROJETO DE REFORMA E AMPLIAÇÃO

CONTEÚDO:

DETALHAMENTO FERRAGENS VIGAS - 2º PAVIMENTO

LOCAL: RUA PRESIDENTE VARGAS, S/Nº - CENTRO MIMOSO DO SUL - E.S.

PROPRIETÁRIO: GOVERNO DO ESTADO DO ESPÍRITO SANTO

AUTOR DO PROJETO: JOSÉ RENATO RODRIGUES CREA: 4710/D- ES

RESPONSÁVEL TÉCNICO: CREA:

DATA: SETEMBRO /2019 ESCALA: INDICADA PRANCHA: 02/06